

CERTIFIED
Solution
Partner

SOLIDWORKS



WHAT'S NEW TO ARTEC STUDIO 13

THE BEST JUST GOT
MUCH BETTER



Each year, Artec 3D overhauls the performance and features of the Artec Studio software, developing new and exciting tools, as well as streamlining the existing ones. The latest version of the Artec Studio software is the pinnacle of high-tech 3D scanning solutions. With broadened functionality, Artec Studio 13 is a high-powered professional tool suite that is faster and more intuitive to use than ever.



ABSOLUTE CONTROL



NEW, HIGH POWER ALGORITHMS



DAZZLING VISUALS



EASE OF USE



FAST PROCESSING SPEED

www.artec3d.com

NEW HIGH-POWER ALGORITHMS

HUGE DATA SETS? FULL STEAM AHEAD!

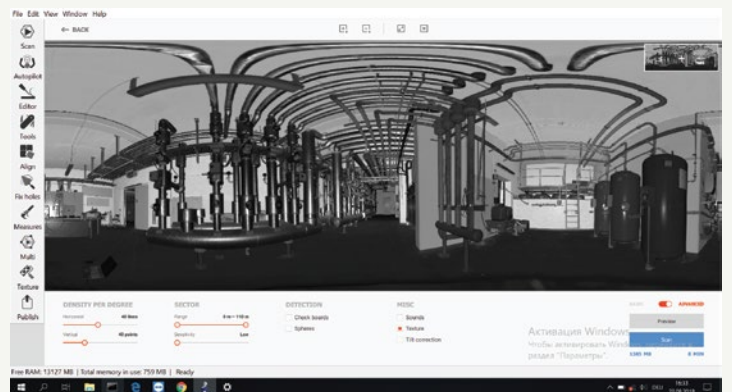
With the power of Artec Studio 13, users can now produce, edit and process even large and highly detailed 3D data with ease. Object size is no barrier, nor is resolution. Even a 500 million polygonal 3D scan of a factory floor poses no difficulty for the software. Scan big objects or areas with Ray, Leo or Eva and even add intricate detail from Space Spider for maximum resolution — Artec Studio 13 is powerful enough for it all.



FULL SUPPORT OF ARTEC RAY AND ARTEC LEO



All tools in Artec Studio 13 have been reworked and boosted to support the big data sets from our brand new beasts, Artec Leo and Artec Ray.



Also new to Artec Studio is the UI for Ray with a large variety of tools for long-distance laser scanning. For example, you can create a quick 2D preview of the surrounding area, easily select the section to be 3D scanned and accurately estimate the scanning time. Artec Studio also supports checkerboard targets and spheres for metrology-grade 3D scanning.

GLOBAL REGISTRATION 250% MORE POWERFUL!

An essential step in 3D data processing, Global Registration is now more effective than ever. Tested on Artec's database of 3D scans, the upgraded tool is up to 250% more likely to fully align 3D data completely automatically.

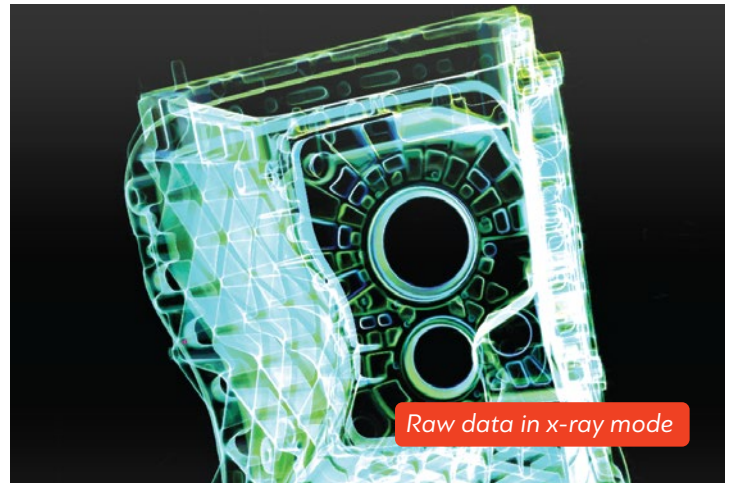
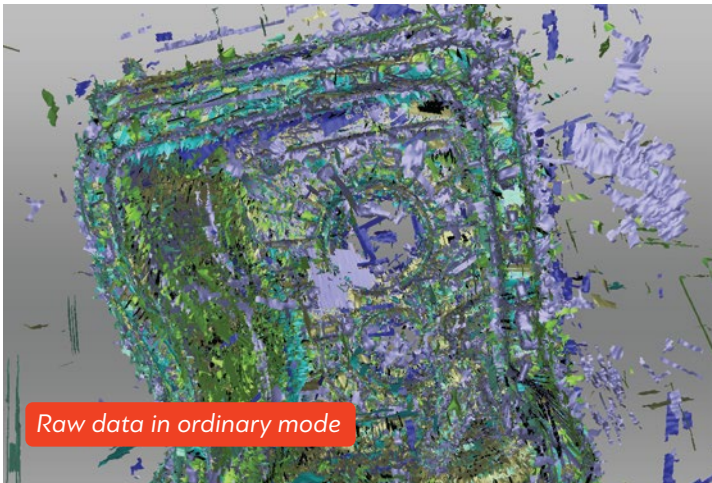
ABSOLUTE CONTROL

EXPANDED FUNCTIONALITY



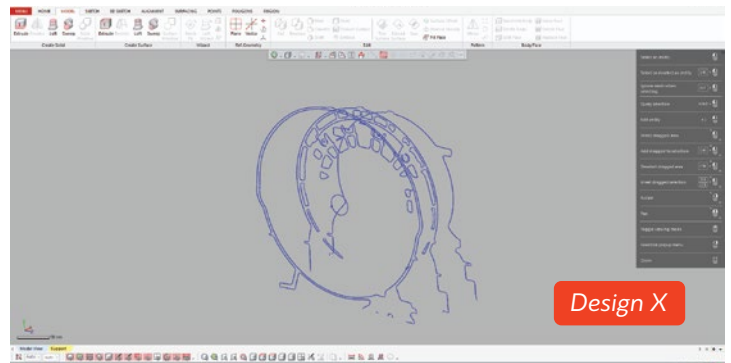
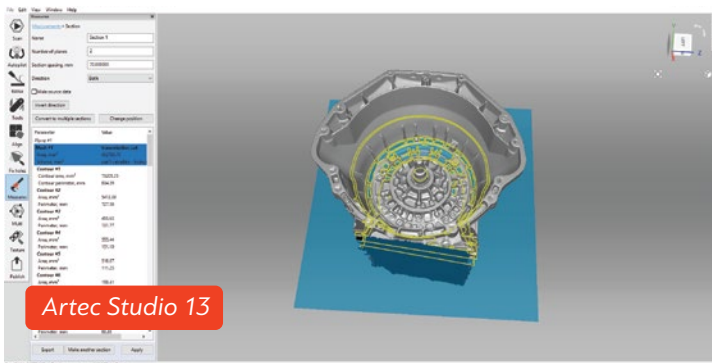
X-Ray vision

Artec Studio 13 brings to you a brand new solution for checking your raw scans. X-Ray mode highlights areas with high point density and makes the data semi-transparent. This is a great new tool that makes it even easier to work with complex geometry and check for possible holes or misalignments.



Full DXF export functionality for CAD

Now you can easily make DXF sections of any 3D model in Artec Studio and export even non-closed contours to CAD software such as Design X or SOLIDWORKS.



Customized settings for global registration

Users now have full control over the speed and quality of global registration. Want your 3D model ready in record time? Or are you trying to register a set of tricky scans with little geometry or textural features? Now you can control the speed/quality balance by specifying the number of key frames, the feature type and the feature search radius to exactly fit your needs.

Point cloud import / export

You can now import BTX files into Artec Studio 13, as well as save and export Artec Ray data as PTX and BTX point cloud data in one click. Ideal for easy use with software such as Geomagic Design X.

SPEED

NOW YOUR WORKFLOW IS FASTER THAN EVER



Global Registration up to double the speed!

In Artec Studio 12 we made Global Registration up to 20X faster than in Artec Studio 11. In Artec Studio 13 we have made processing even faster again — the new Global Registration works at up to double the speed of the previous version, letting you move directly onto the next processing step.

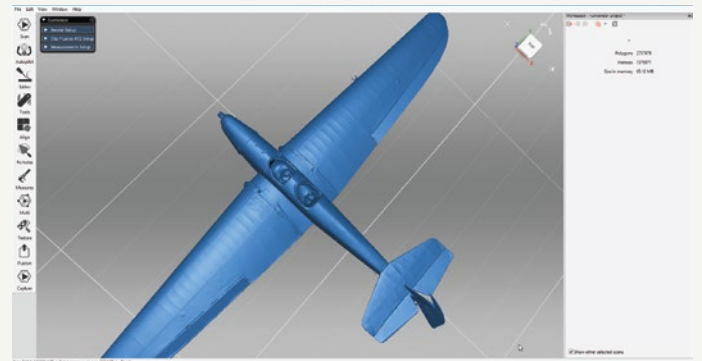


Fine registration up to 50% faster!

Finish off registering your scan frames with this lightening quick updated algorithm, so you can seamlessly move onto the next processing stage, wasting no time.

Smooth, sleek rotation of even huge 3D data sets

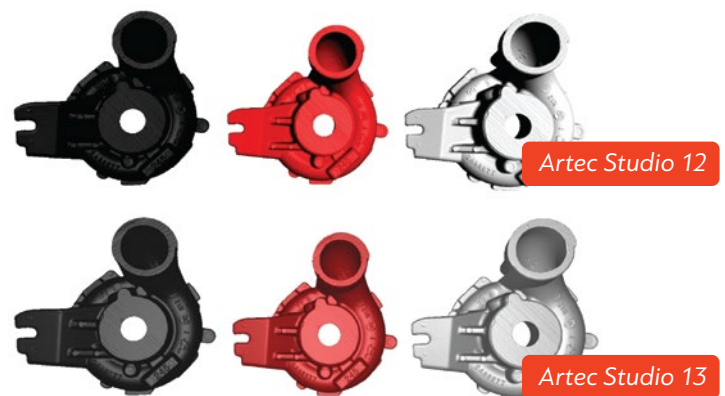
Working with large 3D models is no problem for Artec Studio 13. Thanks to the newly optimized 3D rendering core, you can rotate your model with ease. Check, edit and notate your 3D data to your heart's content.



DAZZLING VISUALS

Striking data visualization

Artec Studio 13 brings you brand new visuals to make all the details on your 3D models really stand out. The balance between dark and bright surfaces has also been boosted, so the geometry of your 3D model will now display to maximum effect from every angle, regardless of the colour of the surface. And the curves on 3D models have been sharpened for best visual effects as well.



Artec Studio 12

Artec Studio 13

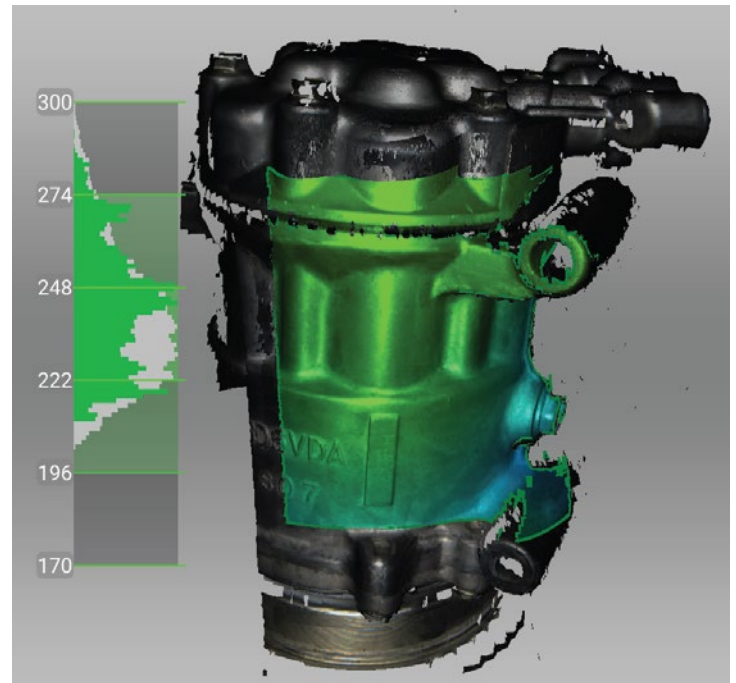
Bright, vibrant colors

The texture captured in Artec Studio 13 has been significantly improved, leaving your 3D models looking better than ever!

EASE OF USE

3D Radar mode for easy capture

The latest version of Artec Studio features 3D Radar mode, a new distance-based prompt for easy 3D scanning with Eva, Space Spider or older Artec 3D scanners. Artec Studio helps you to hold your scanner at the optimal distance from the object by visualizing the real-time 3D data capture in green. If you hold the scanner too close, the color will turn yellow, and then red if you go even closer. Moving the scanner too far away will turn the color blue. A very helpful scanning tool for both new and experienced users to get the very best results from their Artec scanner.



Optimized raw data texture for effective data checking

The visual quality of the raw textured data display in Artec Studio 13 has been improved to make it easier to work with textured scans. The color of the raw data has been optimized so you can now clearly see the quality of the data capture even before fusion.

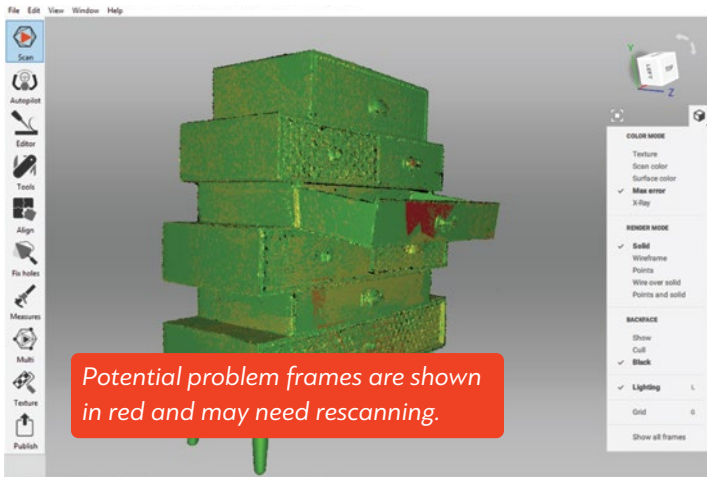


EASE OF USE



Frame registration inspection made easy

Inspecting frame registration has become a simple matter of a few seconds, leading to better results, as well as a faster workflow. Thanks to the reworked Max Error mode, you no longer need to inspect scans manually, since frames that may need additional attention are automatically highlighted for you.



Simple, effective UI

The Artec Studio UI is now even more simple to work with. At the click of a button, switch from a clean, basics only layout, to a full function, all advanced tools included interface. And for those who are used to using a 3D navigation tool, we have added this feature as well, making interacting with your 3D model even easier.



Boosted Global Registration

Not only has Global Registration become up to 100% faster, it has also become even more powerful! Now thanks to this improved algorithm, even tricky objects are a simple to process.



Smooth, improved editing of 3D data

Editing 3D data in Artec Studio has become even more straightforward. The eraser, defeature and lasso tools are significantly faster and smoother to control. And now you can inverse select data too, making it much easier to delete unneeded data. In addition we have also added a new rotation tool for intuitive plane control.



Smart 3D rendering

Artec Studio will automatically detect your computer specs. If your device is a little lacking in power, smart 3D rendering will go easy on your RAM. As you rotate your 3D model, Artec Studio will render the data as a point cloud. As soon as you stop rotating, the model will be shown as the full polygonal mesh again. As a result, even on tablets, rotating high-quality 3D models is fluid and fast.

Try out the new,
streamlined Artec Studio 13

DOWNLOAD FREE TRIAL

COMPARE ARTEC STUDIO

	Artec Studio version		
	13	12	11
EASY 3D SCANNING			
3D Radar mode	•		
Scan black, shiny, fine objects	Automated sensitivity for easy scanning and best results	Automated sensitivity for easy scanning and best results	Manual sensitivity control
Texture and geometry tracking	•	•	•
FAST, AUTOMATIC PROCESSING FEATURES			
Autopilot: automatic post-processing pipeline	•	•	•
Support of large datasets	Up to 500 million polygons	Up to 50 million polygons	Up to 50 million polygons
Global registration: Object range	Up to 250% greater than AS12		
Global registration: Speed	Up to 20 times faster than AS11	Up to 10 times faster than AS11	
Global registration: Settings	Customizable for greater accuracy or speed		
Fine registration	Up to 50% faster		
Base removal	Smart	Smart	Basic
Auto-Align: texture + geometry based	•	•	•
Fast mesh simplification	•	•	•
ADVANCED 3D PROCESSING. ABSOLUTE CONTROL.			
X-Ray mode	•		
Max Error mode	Enhanced for easy scan data inspection	•	•
DAZZLING VISUALS			
Geometry rendering	High detail	Glossy	Basic
Texture rendering	High detail	Glossy	Basic
Optimized raw data rendering	•		
Smooth rendering of 3D models	Up to 500 million polygons		
LARGE DATA MANAGEMENT			
Smart render for large data	•		
Smart memory management for smoother processing	•	•	•
Project compression tool	Ultra-compact	Ultra-compact	Basic
INTUITIVE EDITING TOOLS			
Inverse selection	•		
Plane rotation tool	•		
Auto texture correction	•	•	•
Texture healing brush	•	•	•
Defeature Tool, Eraser and Lasso	Improved	•	•
ERGONOMICS			
3D rotation cube	•		
3Dconnexion 3D mouse compatibility	•	•	•
UI design	New and improved	New	
Hints and hotkeys	•	•	•
MEASUREMENT TOOLS			
Linear, geodesic, sections, distance maps, volume, annotations, CSV, DXF, XML export	Upgraded measurement tools, including export of non-closed contours	•	•
Export mesh square and mesh volume	•	•	•
DIRECT SCAN TO CAD			
Direct export to Design X	•	•	•
Direct export to SOLIDWORKS	SOLIDWORKS 2014–2018	SOLIDWORKS 2014-2017	SOLIDWORKS 2014-2016
EXPORT FORMATS			
Full range of export 3D formats	OBJ, PLY, WRL, STL, BTX, PTX, AOP, ASCII, Disney PTEX, E57, XYZRGB	OBJ, PLY, WRL, STL, AOP, ASCII, Disney PTEX, E57, XYZRGB	OBJ, PLY, WRL, STL, AOP, ASCII, Disney PTEX, E57, XYZRGB
HARDWARE SUPPORT			
3rd party sensor support	Ultimate Edition: Microsoft Kinect, ASUS XTion, PrimeSense, Intel RealSense F200, R200 & SR300, XYZprinting 3D scanner		
Scanning on MacOS	Artec ScanApp ^{beta} or Boot Camp	Artec ScanApp ^{beta} or Boot Camp	Artec ScanApp ^{beta} or Boot Camp
VIDEO CARD COMPATIBILITY			
NVIDIA Quadro	•	•	•
NVIDIA GeForce 400 Series or higher	•	•	•
AMD	•	•	•
Intel Series 4600 and higher	•	•	•

Artec 3D STUDIO 13

Subscription or one-off purchase

Artec Studio is available to purchase as a yearly subscription, ensuring you are always up-to-date with the very latest version, or as a one-off lifetime purchase of a single version only.



Ultimate

For use with Artec 3D scanners and 3rd party sensors:

Artec Leo, Ray, Eva, Eva Lite, Space Spider, Spider, plus discontinued models (MH and MHT series AG, AC, W2 and T2)*

Microsoft Kinect for Windows V1 & V2, ASUS XTion, PrimeSense Carmine, Intel RealSense F200 (IVCAM), R200 (DS4) & SR300, XYZprinting 3D scanner

Professional

For use with Artec 3D scanners:

Artec Leo, Ray, Eva, Eva Lite, Space Spider, Spider, plus discontinued models (MH and MHT series AG, AC, W2 and T2)*

**For information on compatibility with other series of discontinued scanners, please contact support@artec3d.com*



Official Artec 3D Reseller

GoMeasure3D Phone: (434) 946-9125 Email: sales@gomeasure3d.com Web: www.gomeasure3d.com